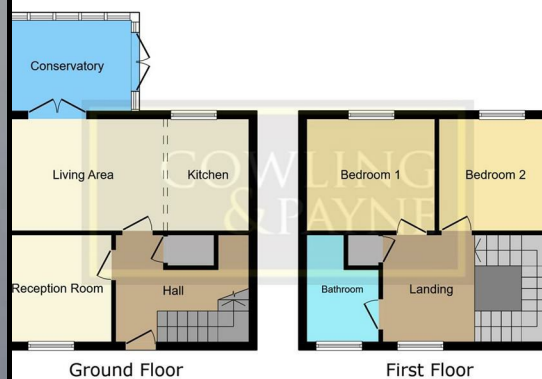


RESIDENTIAL SALES
LETTINGS & PROPERTY
MANAGEMENT

COWLING
& PAYNE

COMING SOON



Illustrative purposes only. It is not drawn to scale. Any measurements, floor areas (including any total floor area), openings and orientations are given as approximate and cannot be relied upon for any purpose and do not form any part of any agreement. No liability is taken for any error, omission or for most only upon its own inspection. Powered by www.propertybox.co.uk

Beeleigh West, Basildon
Guide Price £290,000

*** COMING SOON, GUIDE PRICE £290,000 - £300,000 ***

Welcome to this delightful, terraced property that is currently listed for sale. The property is in good, move-in condition, a wonderful blank canvas that awaits your personal touch.

As you enter, this cosy home greets you with a warm reception room, a wonderful space for both entertaining and unwinding. It's a perfect spot for you to inject your personality and style, transforming it into your own cosy sanctuary or a lively hub for socialising.

The property also boasts of a fully functional kitchen, ready to inspire the chef in you. Whether you're a seasoned cook or someone who enjoys experimenting with new recipes, this kitchen is equipped to cater to your culinary needs. This is then open planned with a lounge/kitchen/diner, offering the ideal social area of the property.

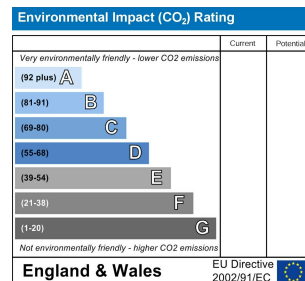
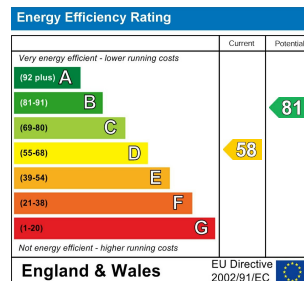
An appealing feature of this property is its two comfortable bedrooms. Cleverly designed, these rooms offer a perfect blend of comfort and functionality, making them an ideal retreat after a long day.

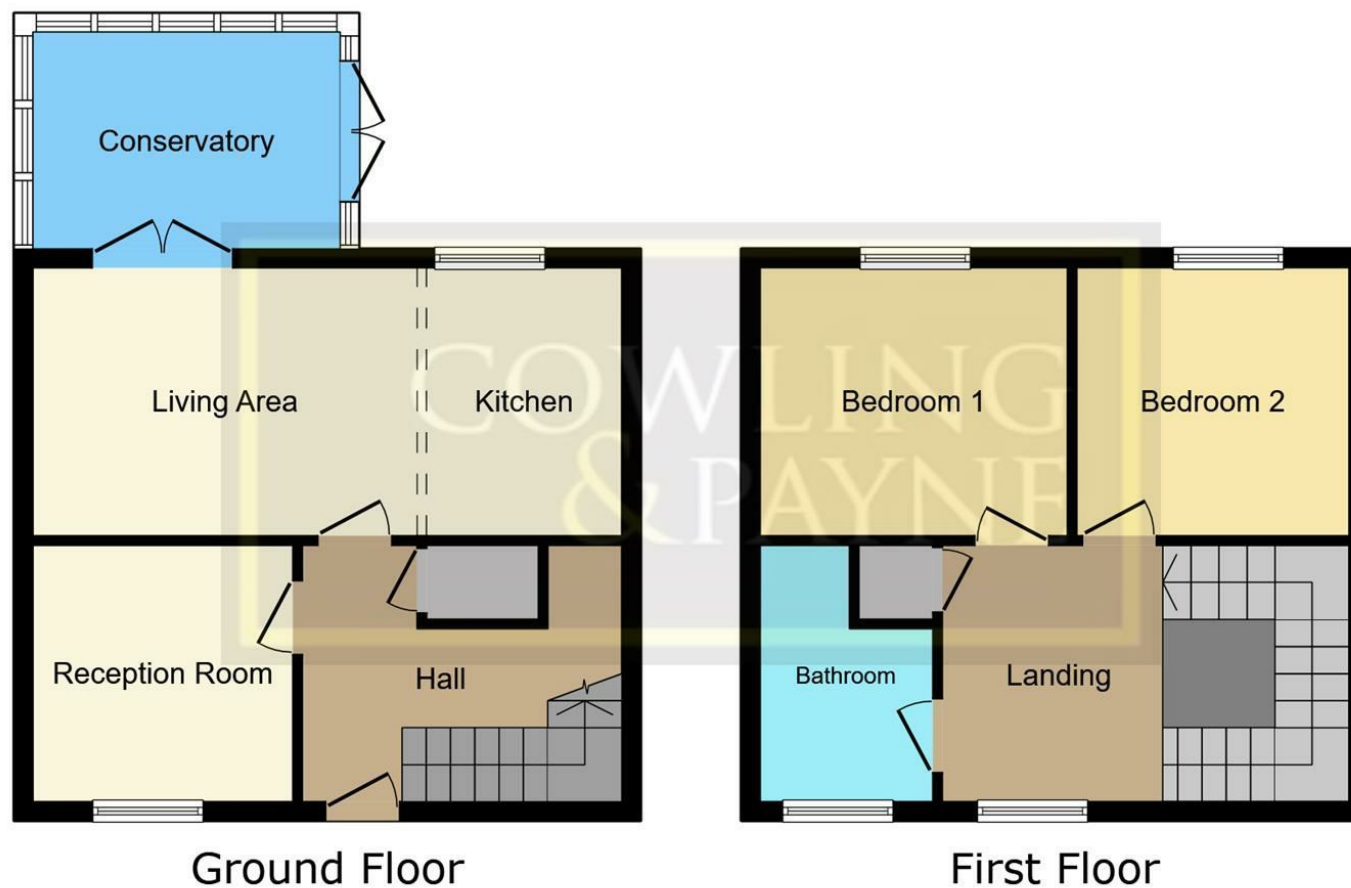
To complement the bedrooms, there is a well-maintained bathroom. The bathroom's design emphasises practicality and comfort.

One of the unique features of this property is the off-street parking in the front. This convenience offers peace of mind, knowing your vehicle is parked safely close to your home.

Additionally, the property also includes a conservatory, a wonderful addition that brings a touch of nature into your home. A perfect place to enjoy a quiet cup of coffee in the morning or to unwind in the evening.

This charming property is a wonderful mix of comfort, functionality, and convenience. It's more than just a house; it's a home waiting to be filled with laughter, love, and memories. It's just missing one thing – you! So why wait? Call us today and let us help you turn this house into your dream home.





This floor plan is for illustrative purposes only. It is not drawn to scale. Any measurements, floor areas (including any total floor area), openings and orientations are approximate. No details are guaranteed, they cannot be relied upon for any purpose and do not form any part of any agreement. No liability is taken for any error, omission or misstatement. A party must rely upon its own inspection(s). Powered by www.Propertybox.io

You may download, store and use the material for your own personal use and research. You may not republish, retransmit, redistribute or otherwise make the material available to any party or make the same available on any website, online service or bulletin board of your own or of any other party or make the same available in hard copy or in any other media without the website owner's express prior written consent. The website owner's copyright must remain on all reproductions of material taken from this website.

